

# Cattle Producer's Handbook

Reproduction Section

440

## Reproductive Tract Anatomy and Physiology of the Cow

*Revised by\**

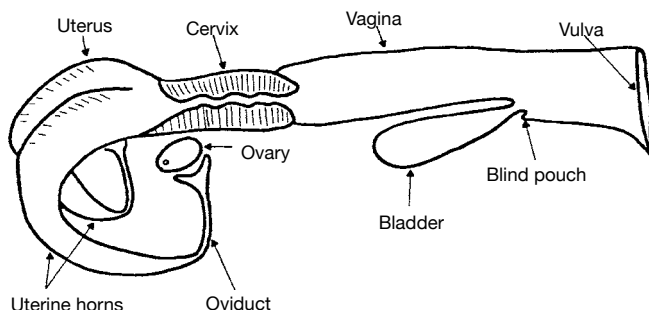
*C. P. Mathis and R. Parker  
Extension Animal Resources Department  
New Mexico State University*

Understanding the anatomy and physiology of the cow's reproductive system is fundamental to good cattle management. Basic knowledge in this area will enable producers to do a better job getting cows rebred, especially if artificial insemination and estrous synchronization are employed. It will also enable producers to understand and better control reproductive diseases and calving problems.

### Anatomy

The ovary is the primary female reproductive organ and has two important functions: (1) producing the female reproductive cell, the egg or ovum, and (2) producing the hormones estrogen and progesterone. The two ovaries of the cow are oval to bean-shaped organs that are one to one and a half inches long and located in the abdominal cavity (Fig. 1).

\*Original authors were T. D. Rich and E. J. Turman, Animal Science Department, Oklahoma State University.



**Fig. 1.** The reproductive tract of a cow.

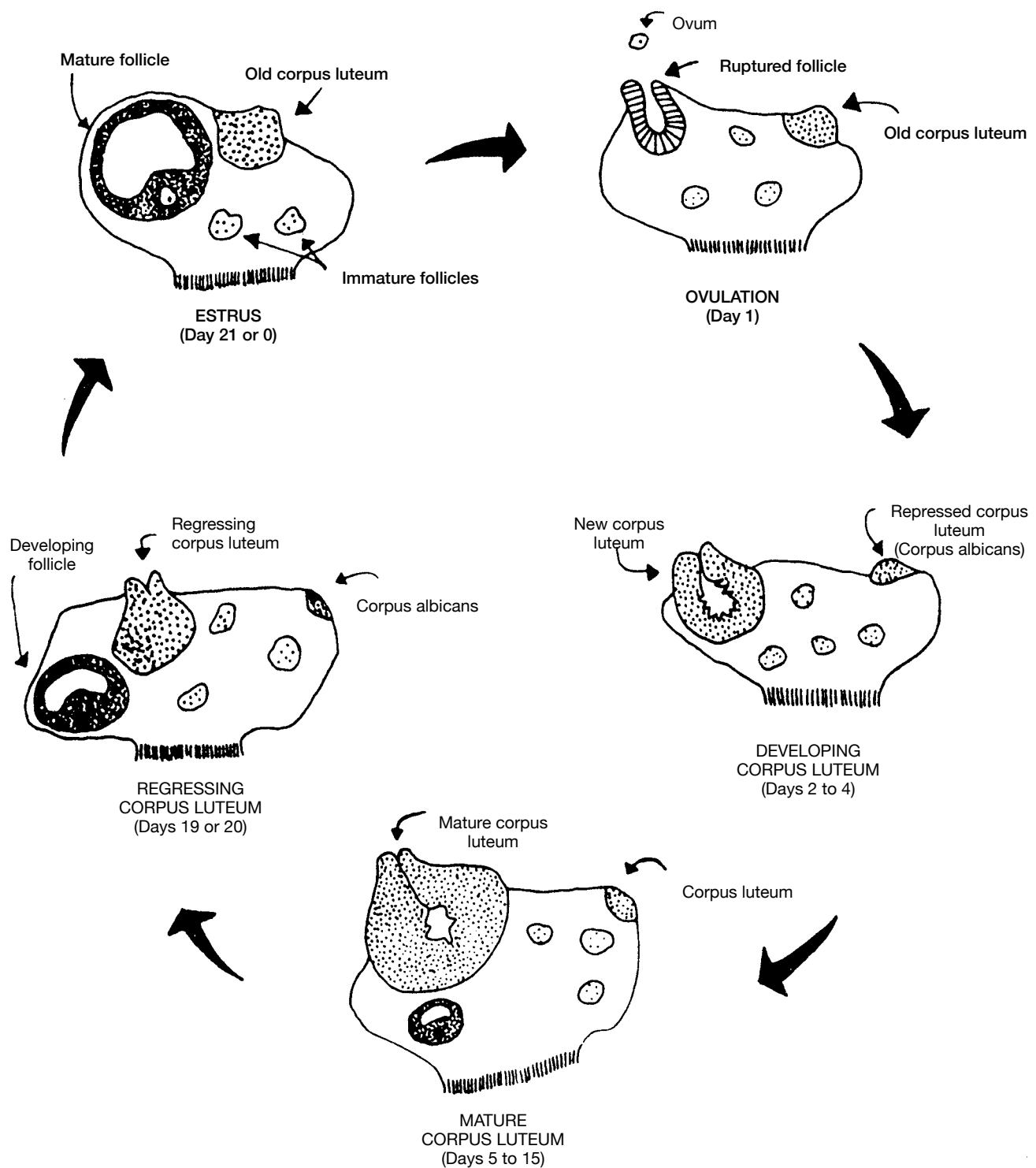
The secondary sex organs are a series of tubes that receive semen, transport sperm to the egg so it can be fertilized, nourish the fertilized egg (embryo), and expel the offspring. These organs include the vagina, cervix, uterus, uterine horns, and oviducts (also called Fallopian tubes), which have a funnel-shaped opening called the infundibulum.

The ovary produces the egg by a process called oogenesis. In contrast to the continuous process of spermatogenesis in the male, oogenesis is cyclic. This cycle (called the estrous cycle) has a characteristic length and consists of a definite sequence of events, both physiological and behavioral.

The ovary contains several thousand tiny structures, called primary follicles, that consist of a germ cell surrounded by a layer of cells. This germ cell has the potential to mature into an egg if the follicle completes development. Most of the primary follicles never develop. Rather, they die, are absorbed by the ovary, and are replaced by newly formed primary follicles.

The relatively few primary follicles that develop completely do so through a series of phases (Fig. 2). Many layers of cells are added to the single layer of cells surrounding the egg in the primary follicle, forming a central cavity.

As the follicle and cavity grow larger the egg becomes attached to the back side of the follicle (opposite the ovulation site) by a stalk of cells. As the follicle grows rapidly, the side opposite the egg bulges from the surface of the ovary and becomes very thin. Once the follicle reaches this mature state it is called a Graafian follicle. At ovulation, the thin portion ruptures to release the contents of the follicle, including the egg.



**Fig. 2. The sequence of events in a typical 21-day estrous cycle in which pregnancy does not occur.**

After ovulation, the cells that developed within the follicle differentiate to form the corpus luteum, which has the important function of producing progesterone. The released egg is caught by the infundibulum and moves into the oviduct where fertilization occurs, if viable sperm are present. The egg remains capable of fertilization for only a few hours; thus, it is important that fertile sperm be present near the time of ovulation.

The egg moves through the oviduct into the uterus within the next 3 or 4 days. If it is fertilized, it begins embryological development in the uterus. If it is not fertilized it degenerates.

The body of the uterus is relatively short and poorly developed, while the uterine horns are longer and well developed. The embryo develops in the uterine horns. The fetus develops within a layer of membranes called

the placenta. The mother nourishes the fetus by diffusion of nutrients across the placenta. There is no direct blood connection between fetus and mother.

The cervix is essentially the neck of the uterus. It has thick walls and a small opening that is difficult to penetrate because of overlapping or interlocking folds (annular rings). It serves as a passageway for sperm deposited in the vagina and for the fetus at the time of birth. During pregnancy it is usually filled with a thick secretion that serves as a plug to protect the uterus from infective material entering through the vagina.

The vagina serves as the receptacle for the male penis during copulation. During natural mating, semen is deposited in the vagina near the cervix. The urinary bladder opens to the exterior through the urethra, which opens into the vagina. This region of the vagina is restricted in size because of sphincter muscles associated with the urethral opening.

The region posterior to the external urethral orifice is called the vestibule and is a common passageway for both the urinary and the reproductive systems. The external opening of the vagina is called the vulva.

## Hormonal Regulation of the Female Reproductive Tract

Normal reproduction in the female depends on hormones, which are specific chemical substances produced by specialized glands called endocrine glands. These secretions pass into the body fluids (blood and lymph) and are transported to various parts of the body, where they exert several specific effects.

The female hormone estrogen is produced by the Graafian follicle. Another hormone originating from the ovary is progesterone, which is produced by the corpus luteum. Each has an important role in the female reproductive process.

Estrogen regulates these functions: (1) development and functioning of the secondary sex organs; (2) onset of heat, or estrus (the period of sexual receptivity); (3) rate and type of growth, especially fat deposition; and (4) primes or prepares the prepuberal heifer and postpartum cow for the onset of sexual activity.

Progesterone is the hormone of pregnancy. It suppresses the further development of follicles and estrogen secretion. While progesterone is being produced, the female exhibits estrus. Progesterone is necessary for preparing the uterus to receive the fertilized egg and maintains a proper uterine environment for pregnancy.

Estrogen and progesterone are not completely separate in their effects as both are necessary for complete development of some important organs. Uterine development is initiated by estrogen and completed by progesterone. The fertilized egg will not attach and survive in the uterus unless that tissue has been properly prepared by the action of estrogen and progesterone. Estrogen causes rhythmic contractions of the uterus. On the other hand,

progesterone has a quieting effect on the uterus so there are no contractions that might disturb pregnancy.

Complete development of the mammary gland also depends on both hormones. Estrogen promotes the growth of the duct system, and progesterone is necessary for the development of the clusters of milk-secreting alveoli on the ducts. In general, estrogen makes things happen and progesterone calms them down.

The anterior pituitary gland is located at the base of the brain and produces gonadotrophic hormones that directly influence the production of ovarian hormones. The gonadotrophic hormones are follicle stimulating hormone (FSH) and luteinizing hormone (LH), named for their effects on the ovary. Follicle stimulating hormone stimulates the growth, development, and function of the follicle, while LH causes the follicle to rupture and the corpus luteum to develop.

Several other hormones are known to have important roles in regulating the cow's reproductive system, and undoubtedly others will be identified or additional functions of known hormones will be elucidated as research efforts continue. The other hormone group that merits discussion is the prostaglandins, which are secreted by many body tissues and perform a variety of functions. The prostaglandin primarily affecting the estrous cycle of a cow is prostaglandin  $F2_{\alpha}$  ( $PGF2_{\alpha}$ ), which is produced by the uterus.

Prostaglandin  $F2_{\alpha}$  is the natural luteolytic agent that causes the corpus luteum to regress late in the estrous cycle and allows a new estrous cycle to be initiated in the non-pregnant female. In a pregnant cow, a signal is sent from the developing embryo to the uterus, preventing  $PGF2_{\alpha}$  release and, therefore, allowing the corpus luteum to persist throughout pregnancy. Maternal recognition of pregnancy is believed to occur between days 16 and 17 after fertilization.

Injecting cows or heifers with  $PGF2_{\alpha}$  between days 6 and 16 of the estrous cycle will cause premature regression of the corpus luteum with the best results achieved among females injected on days 10 to 16. Injecting  $PGF2_{\alpha}$  during the first five (1 to 5) and last five (17 to 21) days of the estrous cycle will generally not cause luteal regression. Luteolytic response allows use of prostaglandins in estrus synchronization programs in cow herds (see 405 "Synchronizing Estrus in Beef Cattle") and for initiating abortion in feedlot heifers.

## The Estrous Cycle

The reproductive cycle of the cow consists of a series of events that occur in a definite order over a period of days. The estrous cycle in the cow averages 21 days (range is 17 to 24). During this time, the reproductive tract is prepared for estrus or heat (the period of sexual receptivity) and ovulation (egg release). Figs. 2 and 3 outline the sequence of anatomical and hormonal changes that occur during a typical 21-day cycle in which pregnancy does not occur.

NOTE: Timing given for the following events is approximate and differs for different cycle lengths.

**Day 0:** The cow is in estrus (standing heat) due to an increased concentration of estrogen. Near the end of standing heat, the mature Graafian follicle ovulates (ruptures) in response to a surge of LH released by the pituitary gland.

**Days 1 and 2:** The cells that formerly lined the follicle change and become the luteal cells of the corpus luteum. This change in cell form is caused by hormonal action, primarily the action of LH.

**Days 2 to 5:** The corpus luteum grows rapidly in both size and function. At this stage numerous follicles may be seen on the ovary but by day 5 they have begun to regress.

**Days 5 to 16:** The corpus luteum continues to develop and typically reaches its maximum growth and function by day 15 or 16. It secretes the hormone progesterone, which inhibits (blocks) LH release by the pituitary gland. During this period, the ovaries are relatively inactive except for the functional corpus luteum. No follicles reach maturity and/or ovulate because of high concentrations of progesterone.

**Days 16 to 18:** Increased follicular growth and accompanying estrogen secretion by the ovary stimulates prostaglandin secretion by the uterus, causing rapid regression of the corpus luteum.

**Days 18 and 19:** The corpus luteum is almost non-functional and progesterone release is suppressed, removing the blocking action of progesterone on LH and FSH. Of the several follicles that are initially recruited, one becomes dominant by a surge in rapid growth and activity. As this Graafian follicle grows, it secretes increasing amounts of estrogen and the smaller follicles regress.

**Days 19 and 20:** With the increase in estrogen release by the Graafian follicle and a corresponding decrease in progesterone by the regressing corpus luteum, estrus or heat will occur (cycle has now returned to day 0). High estrogen concentration in the blood triggers a release of LH near the onset of heat. After this surge in LH blood concentrations, the mature follicle ruptures to release the egg, and the cellular tissue left behind becomes luteinized and forms a new corpus luteum (cycle has returned to days 1 and 2). Progesterone again is the dominant hormone.

This review of estrous cycle events is based on a full cycle in which pregnancy does not occur. If the egg is fertilized and begins developing in the uterus, the corpus luteum does not regress but continues to function and secrete progesterone.

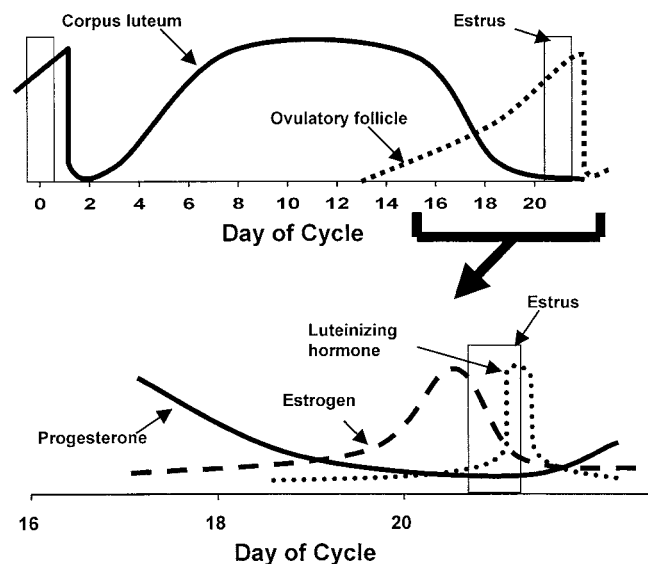
During pregnancy no follicles develop to maturity and heat does not normally occur. Increased concentrations of progesterone promote uterine quiescence, providing the most favorable conditions for the developing fetus.

Any condition that prolongs the period of time when blood concentrations of progesterone remain high (such as implanting, injecting, or feeding progestins for estrus synchronization) will keep the female from exhibiting estrus. Occasionally the corpus luteum does not regress normally even though the animal does not become pregnant (pseudo-pregnancy). This requires diagnosis and treatment by a veterinarian.

Occasionally, abnormally short estrous cycles (7 to 11 days) occur. This condition appears to be caused by either no corpus luteum being formed, or if one is formed, it is nonfunctional and progesterone concentration remains too low to sufficiently suppress the release of gonadotropins from the anterior pituitary.

Cows also have periods of anestrus (non-cycling). For example, an anestrus period is commonly observed in cows after calving. Low levels of nutrition can contribute to the duration of anestrus, especially in young cows nursing calves.

Estrus is not always accompanied by ovulation, nor ovulation by estrus. Heat without ovulation (anovulatory heat) will not result in pregnancy even if the female is bred. Ovulation without the external signs of heat (quiet or silent heats) is not uncommon in cows, especially the first few weeks after calving. Such females will generally not “stand” to be bred by a bull.



**Fig. 3.** The anatomical and hormonal changes that occur during a typical 21-day estrous cycle.



©2016

Issued in furtherance of cooperative extension work in agriculture and home economics, Acts of May 8 and June 30, 1914, by the Cooperative Extension Systems at the University of Arizona, University of California, Colorado State University, University of Hawaii, University of Idaho, Montana State University, University of Nevada/Reno, New Mexico State University, Oregon State University, Utah State University, Washington State University and University of Wyoming, and the U.S. Department of Agriculture cooperating. The Cooperative Extension System provides equal opportunity in education and employment on the basis of race, color, religion, national origin, gender, age, disability, or status as a Vietnam-era veteran, as required by state and federal laws. Fourth edition; December 2016 Reprint